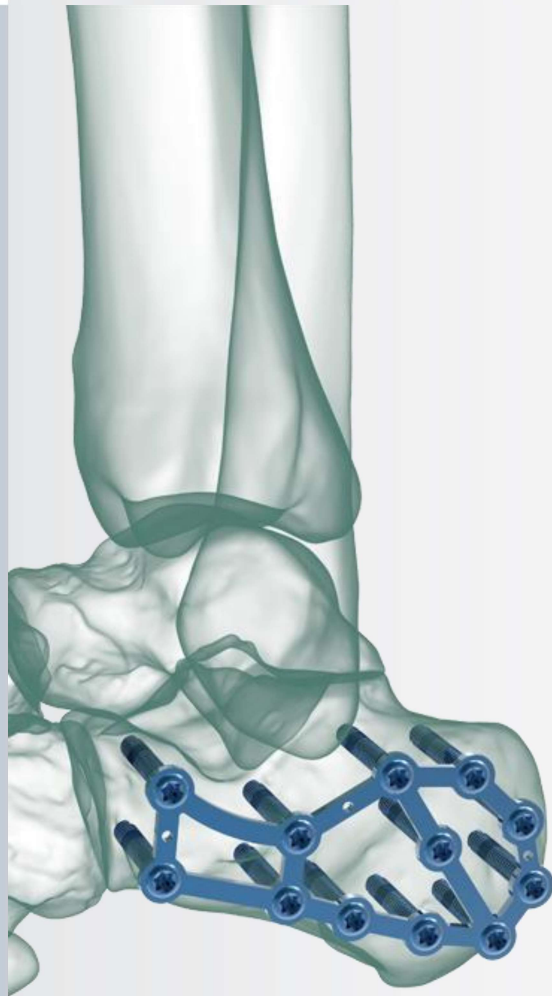


TRUE LOCK Calcaneus Plates are indicated for fractures and osteotomies of the calcaneus including, but not limited to, extra-articular, intra-articular, joint depression, tongue type, and severely comminuted fractures.

Calcaneal fractures are the most common tarsal bone fractures and they can be challenging to treat. The stabilization of the plate is increased by the lattice design. The plate has a slim design to minimize soft tissue irritation.

3 different size option  
mini,short,long.

TRUE LOCK Calcaneus Plates are made of Ti6Al4V ELI material (ASTM F136).

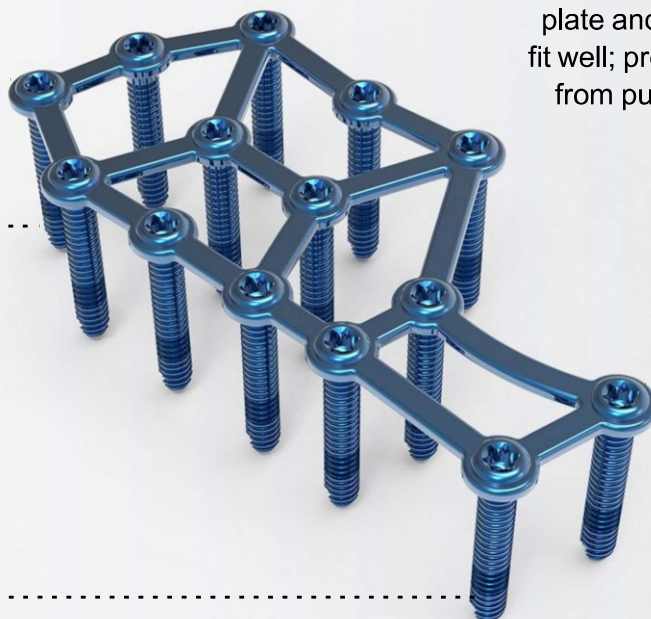
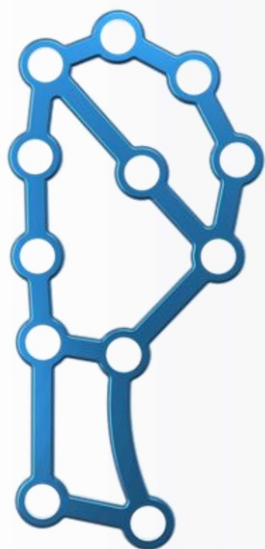


## TRUE LOCK Calcaneus Plate Features



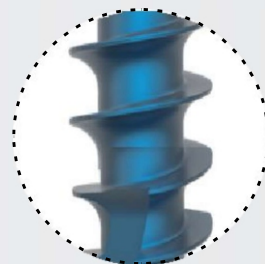
Low-profile 1.5mm

Anatomically contoured.

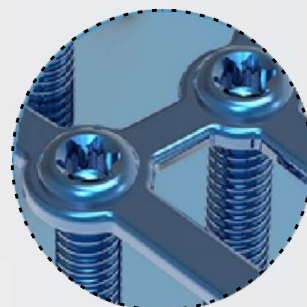


Extensile lateral or sinus tarsi approach.

At the cancellous part of the bone near the joint, 4,0 mm cancellous locking screw option supports plate and screw fit well; prevents it from pull out .



14 locking holes address multiple fracture patterns.



## TRUE LOCK Calcaneus Plate Screws Info

3.5 mm Non-Locking Cortical Screw



3.5 mm Locking Cortical Screw



4 mm Non-Locking Cancellous Screw



4 mm Locking Cancellous Screw



4 mm Locking Cannulated Cancellous Screw



Reference Number:	Hole Count:	Length (mm)
201-11140-012	12 hole	65
201-11140-013	13 hole	75
201-11140-014	14 hole	80